

Transient inhibition of the Sodium-Glucose Cotransporter 2 early after ischemia/reperfusion injury ameliorates Chronic Kidney Disease in rats .

Miguel Ángel Martínez-Rojas^{1,2}, Hiram Balcázar^{1,2}, Isaac González-Soria^{1,2}, Jesús
Manuel González-Rivera^{1,2}, Mauricio E. Rodríguez-Vergara^{1,2}, Laura A. Velazquez-
Villegas³, Juan Carlos León-Contreras⁴, Rosalba Pérez-Villalva^{1,2}, Francisco Correa⁵,
Florencia Rosetti⁶, and Norma A. Bobadilla^{1,2}

**Supplemental Western Blot Images
Obtained with the iBright CL1500 Imaging System**

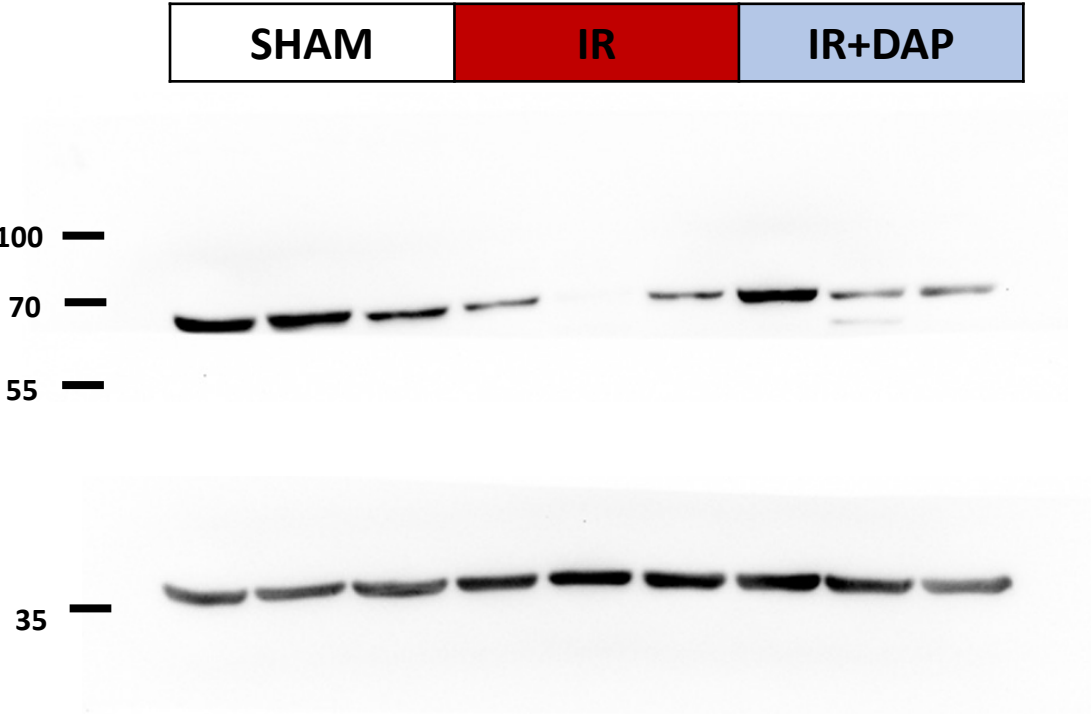
Full unedited gel for Figure 2: AGT

30 ug of kidney cortex homogenates

Primary Rabbit ab213705 Antibody: 1:5000

Anti-Rabbit 1:20,000

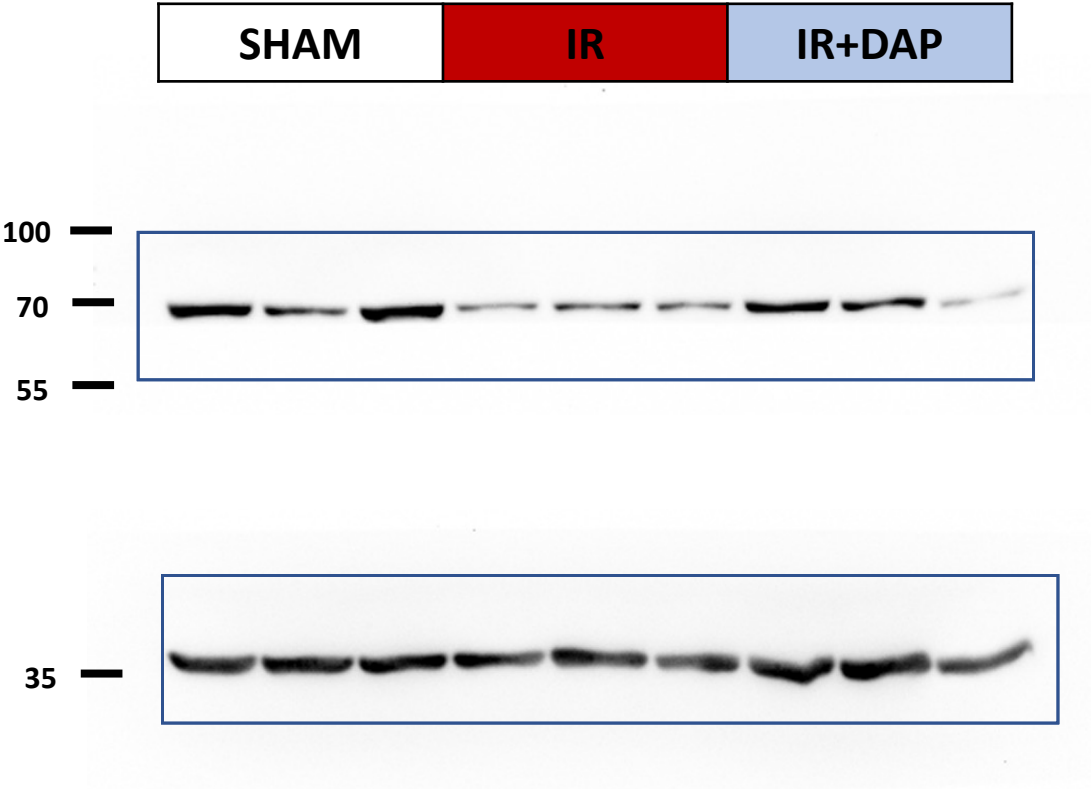
Exp 5 seg



Primary Rabbit GAPDH Antibody: ab181602

1:120,000 Rabbit 1:10,000 Exp 5 s

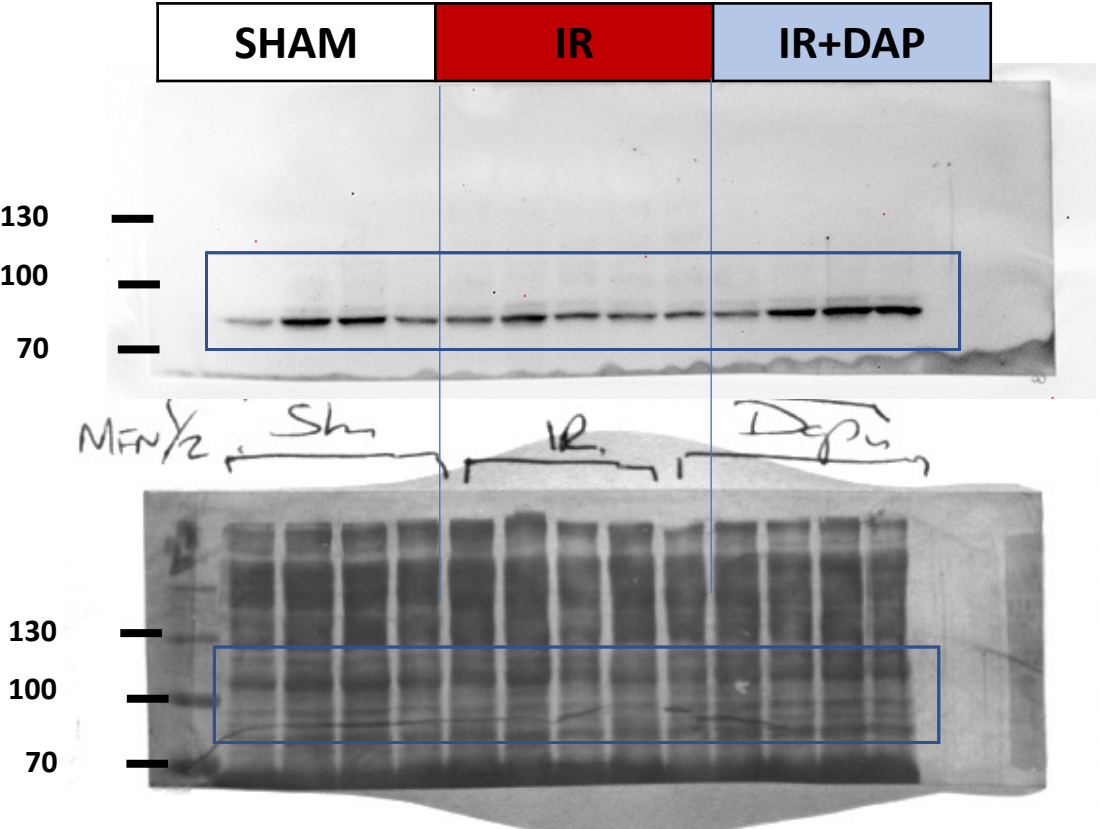
19/04/23



Full unedited gels for Figure 4 and 7: Mitofusin 1 and 2
20 ug of kidney cortex mitochondria

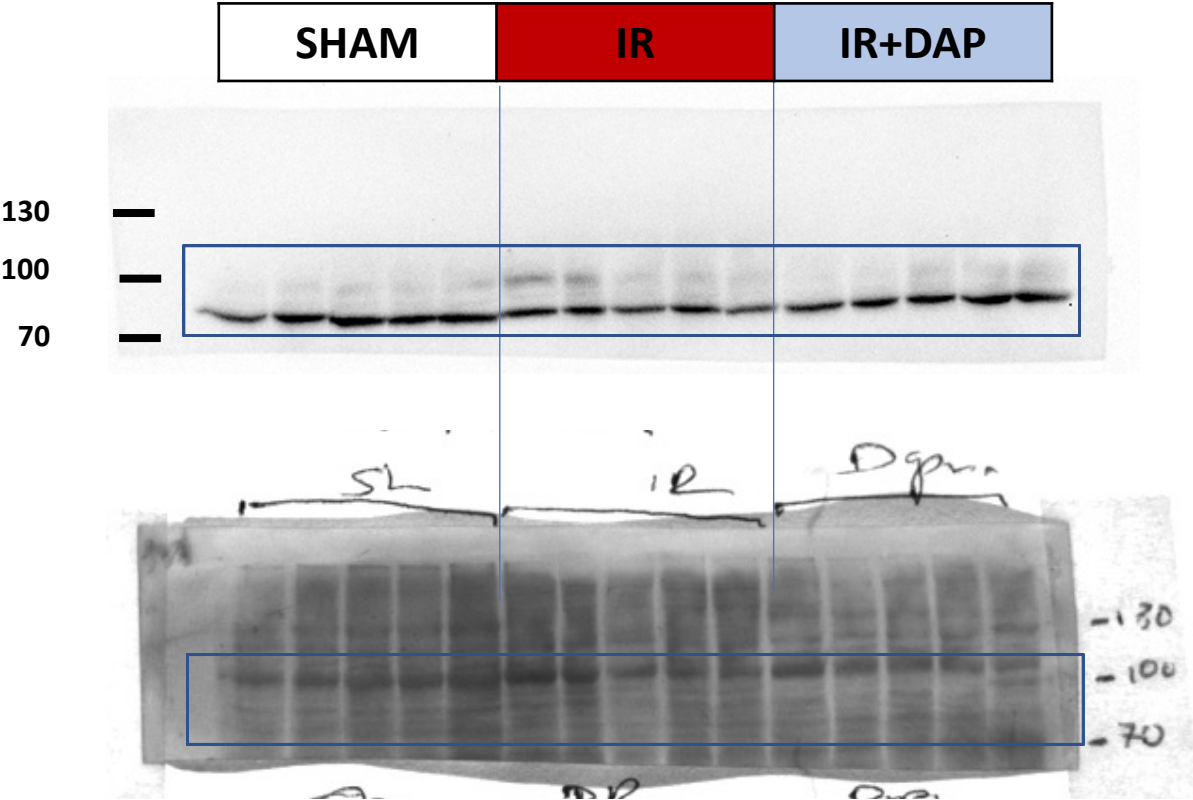
Primary Mouse Anti-Mfn: 1:2000
Anti-Mouse ab6789 1:40,000 Exp 10 seg

5 days after AKI



29/11/2023

10 days after AKI



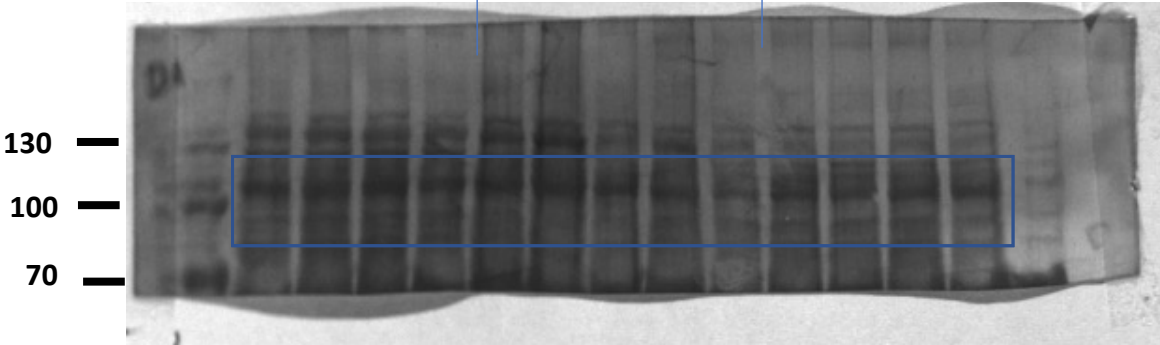
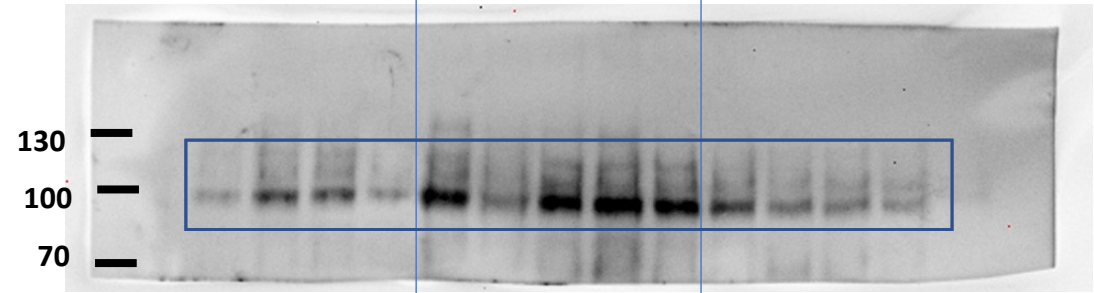
04/01/2024

Full unedited gel for Figure 4 and 7: Drp1
60 ug of kidney cortex isolated mitochondria

Primary Mouse Anti-Drp1 sc-271583 : 1:500
Anti-Mouse ab6789 1:40,000 Exp 1 min

5 days after AKI

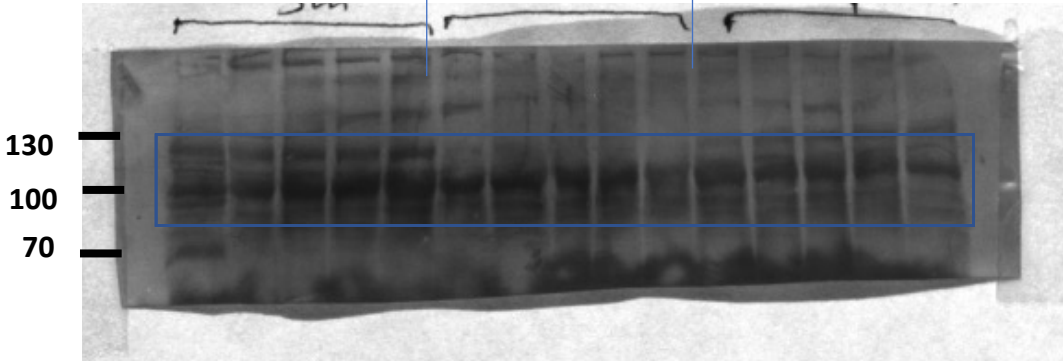
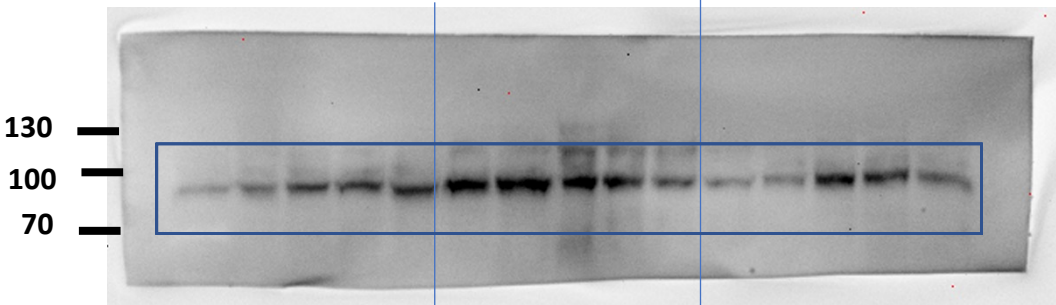
SHAM	IR	IR+DAP
------	----	--------



15/12/2023

10 days after AKI

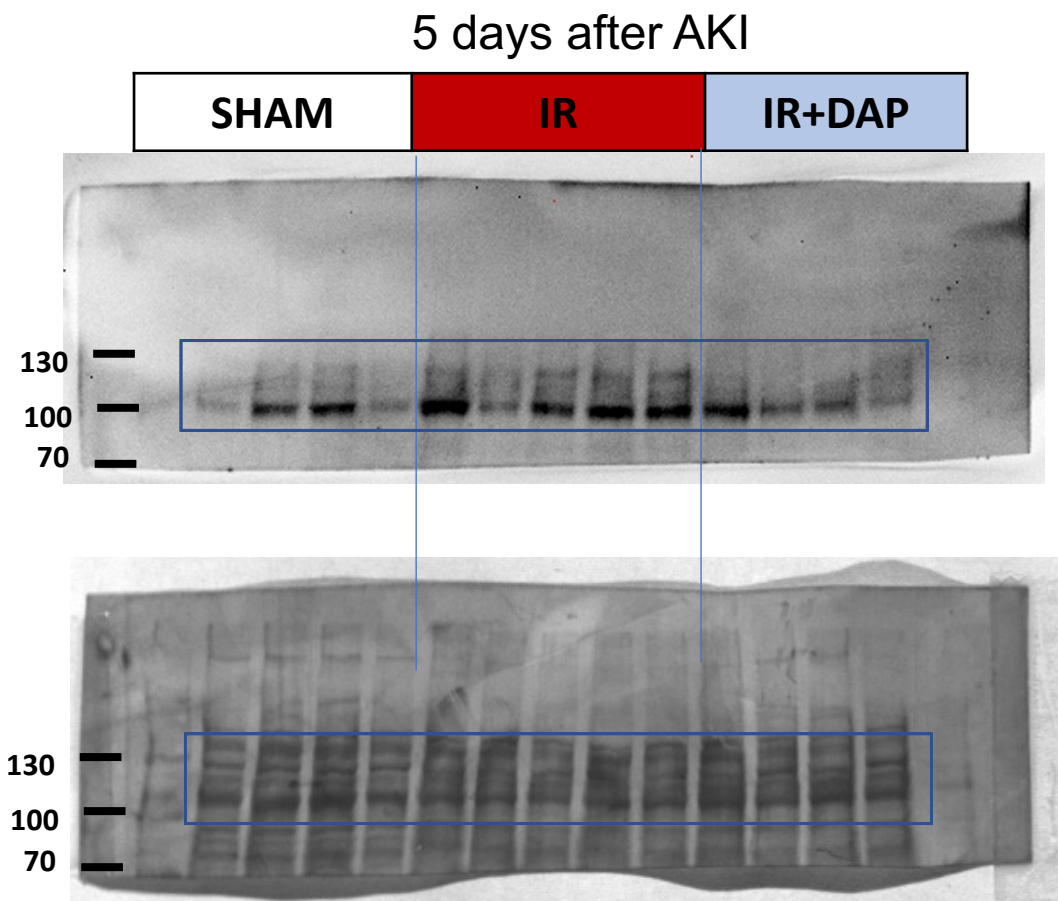
SHAM	IR	IR+DAP
------	----	--------



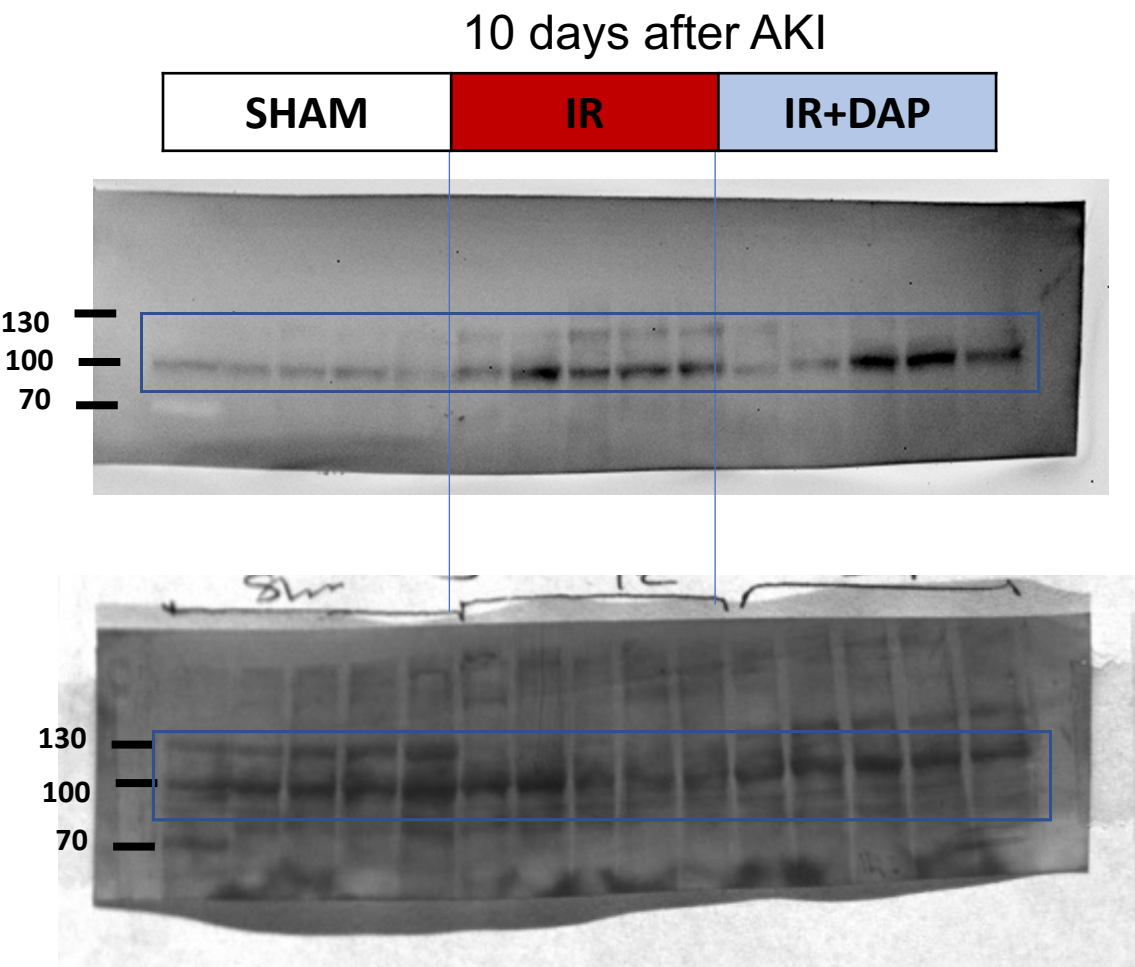
21/12/23

Full unedited gel for Figure 4 and 7: OPA1
60 ug of kidney cortex isolated mitochondria

Primary Mouse Anti-OPA1 sc-393296: 1:500
Anti-Mouse ab6789 1:40,000 Exp 30 seg



15/12/2023

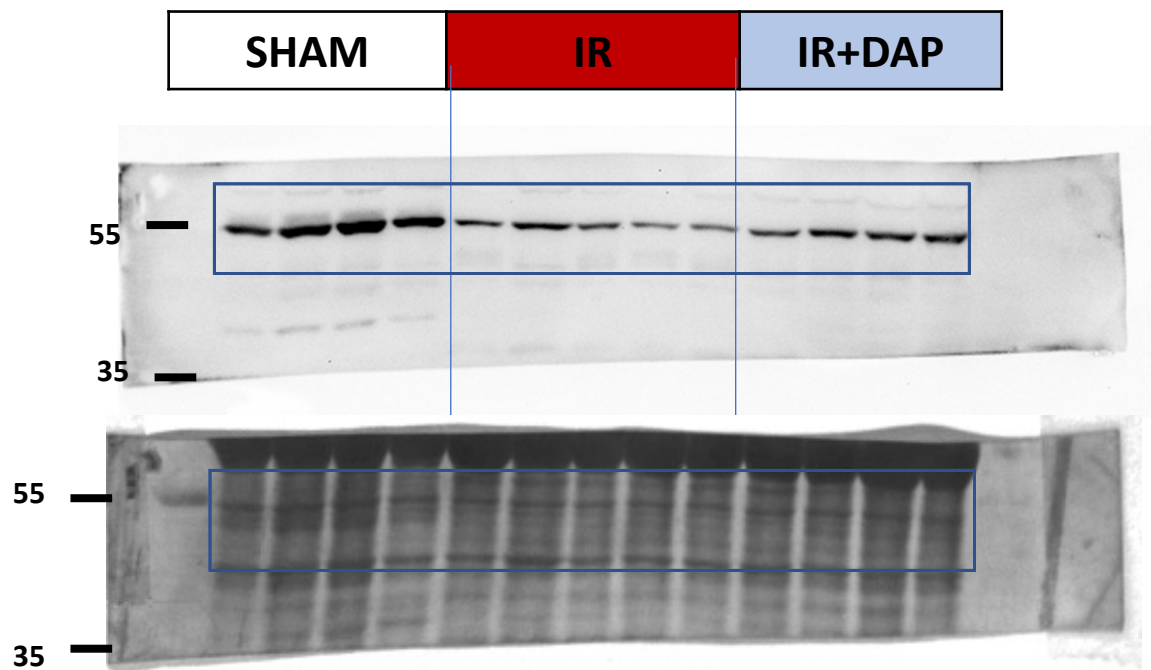


21/12/23

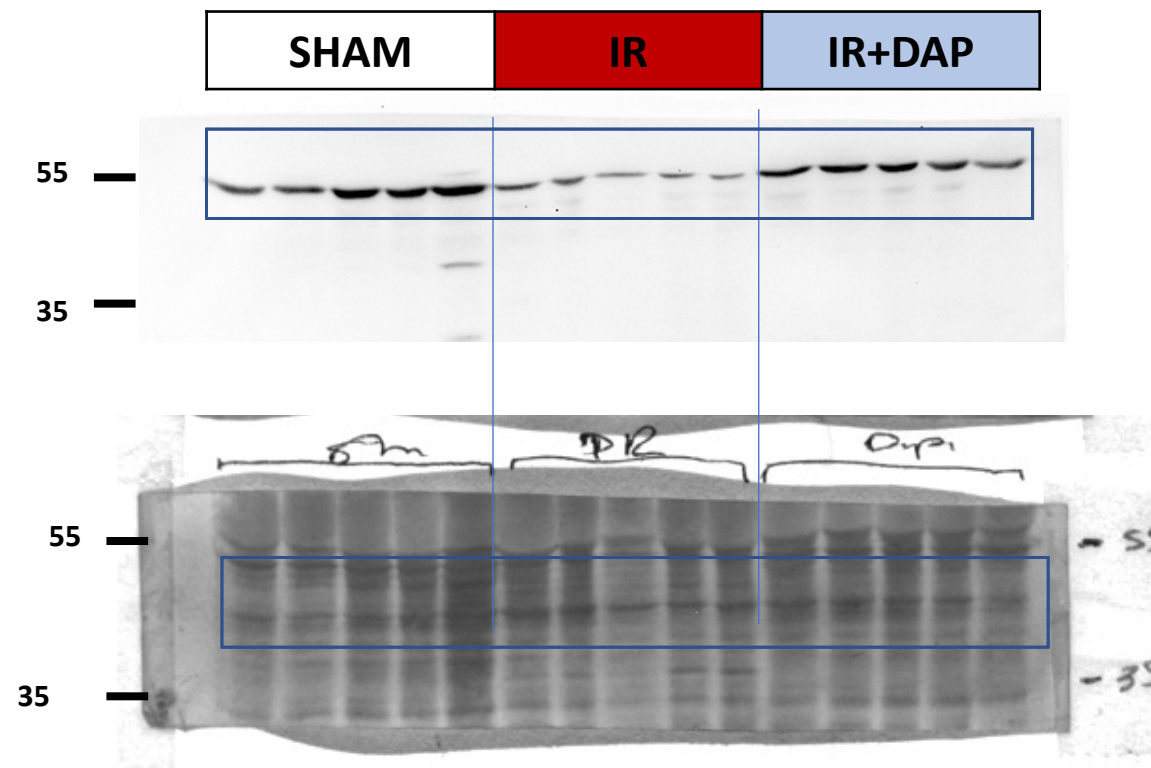
Full unedited gel for Figure 4 and 7: PINK1
20 ug of kidney cortex isolated mitochondria

Primary Rabbit Anti-PINK1 P0076 1:1000
Anti-Rabbit 211-032-171 1:15,000 Exp 10 seg

5 days after AKI

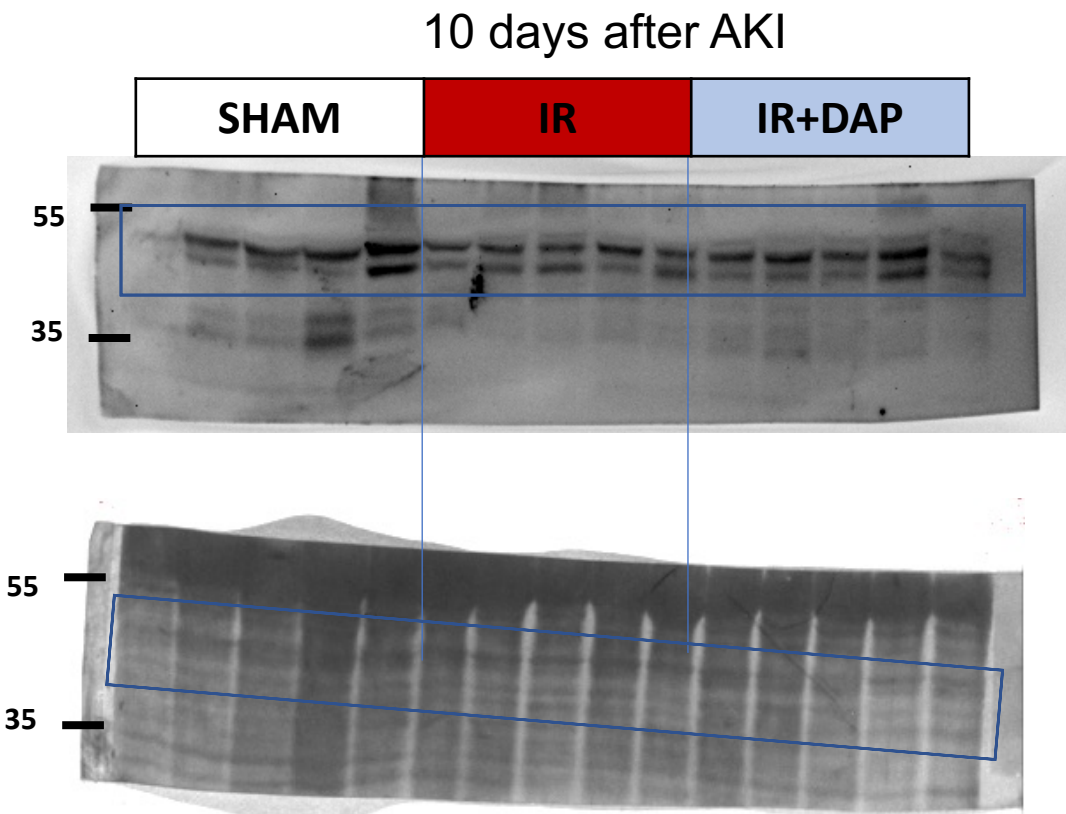
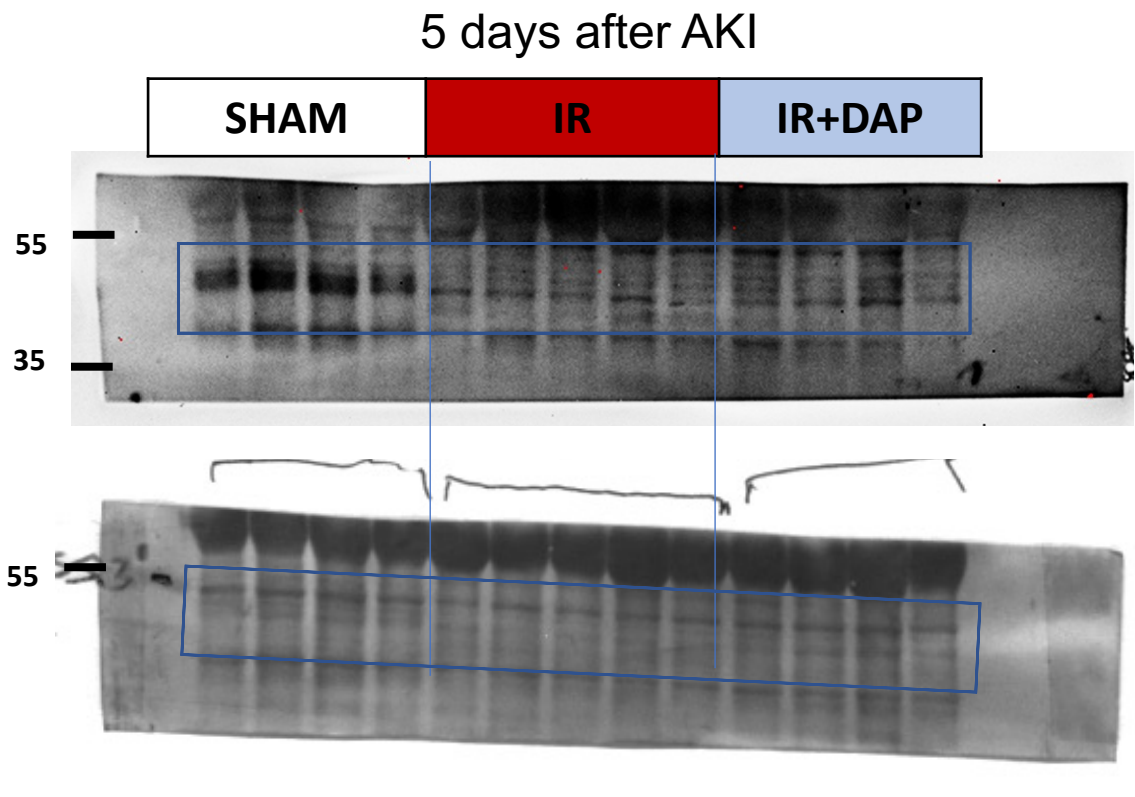


10 days after AKI

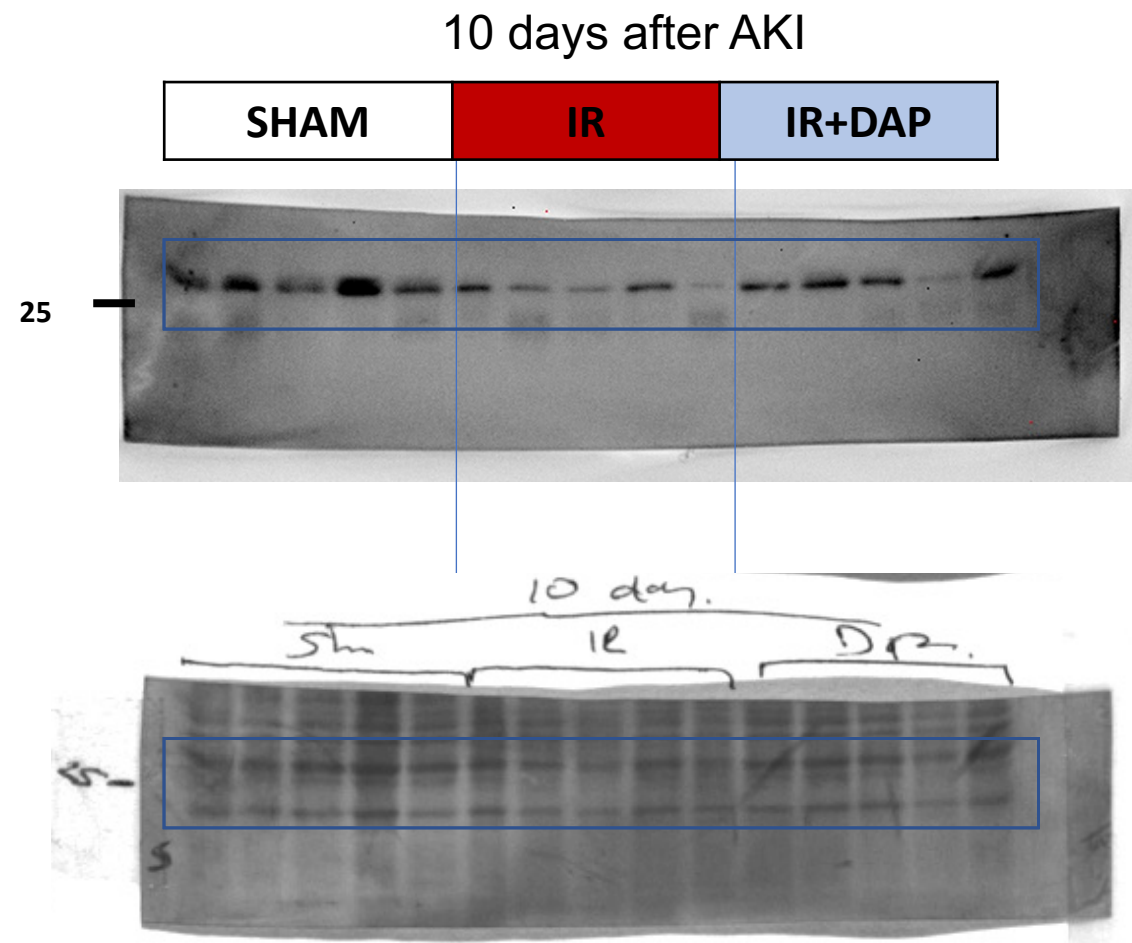
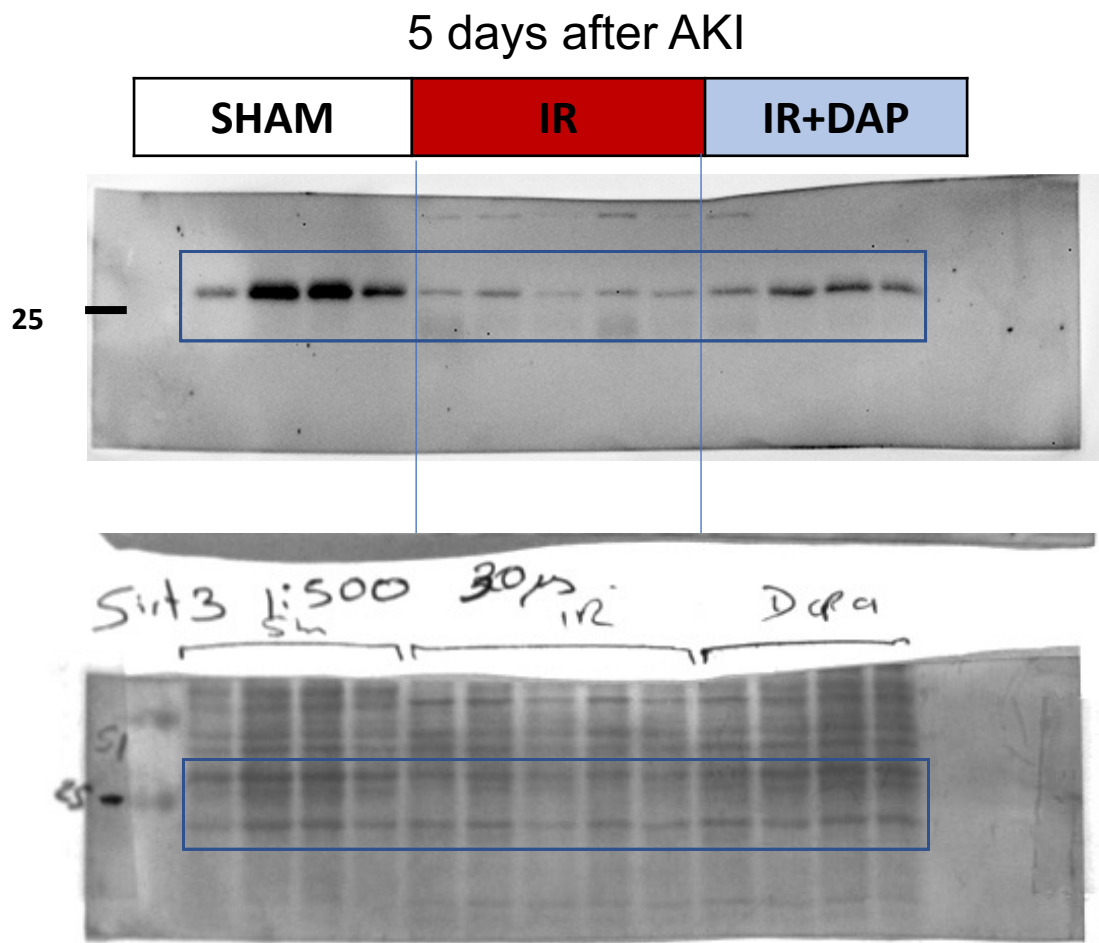


Full unedited gel for Figure 4 and 7: Parkin
60 ug of kidney cortex isolated mitochondria

Primary Rabbit Anti-Parkin P6248 1:1000
Anti-Mouse ab6789 1:40,000 Exp 3 min



Full unedited gel for Figure 5 and 8: Sirt3
30 ug of kidney cortex isolated mitochondria
Primary Mouse Anti-Sirt3 sc-365175 1:1000
Anti-Mouse ab6789 1:40,000 Exp 1 min



Full unedited gel for Figure 5 and 8: OXPHOS Complex V, III, I

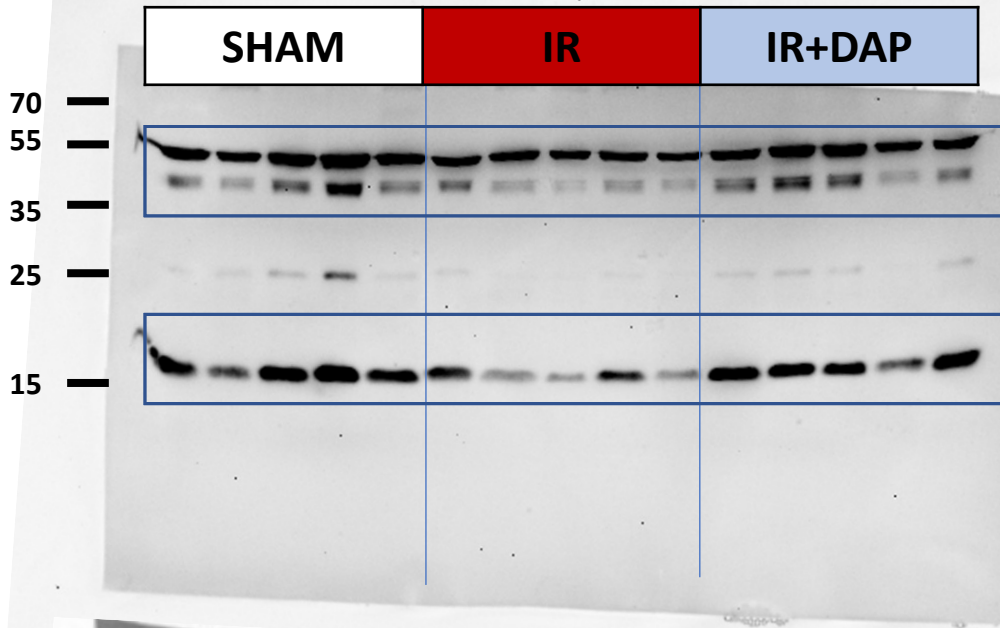
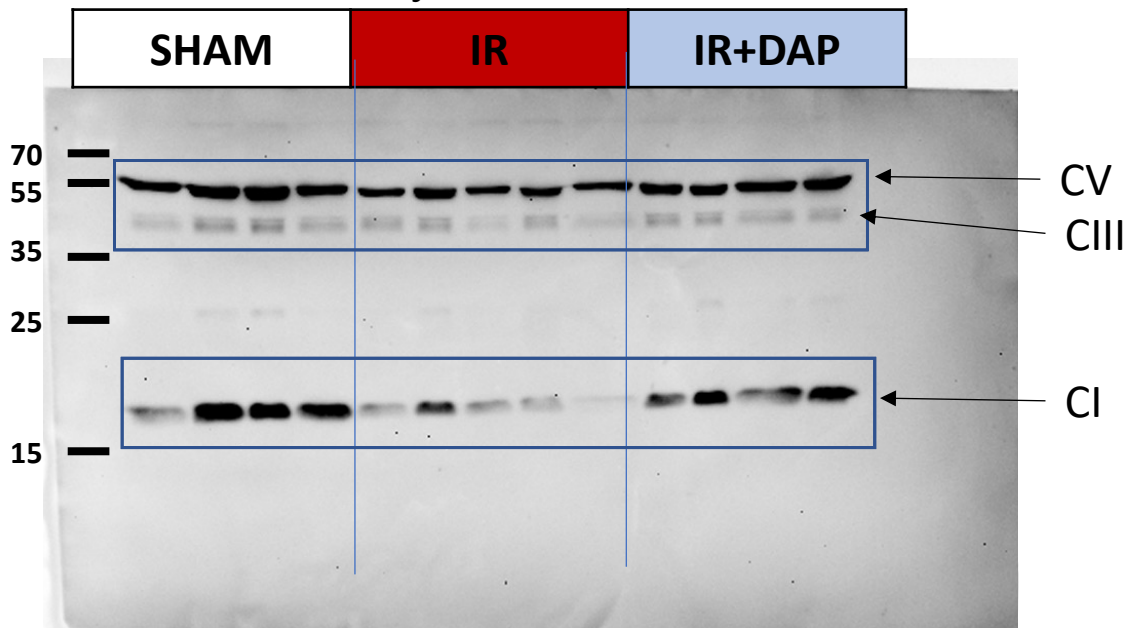
20 ug of kidney cortex mitochondria

Primary Mouse Anti-OXPHOS ab110413: 1:20,000

Anti-Mouse ab6789 1:40,000 Exp 1 min

10 days after AKI

5 days after AKI



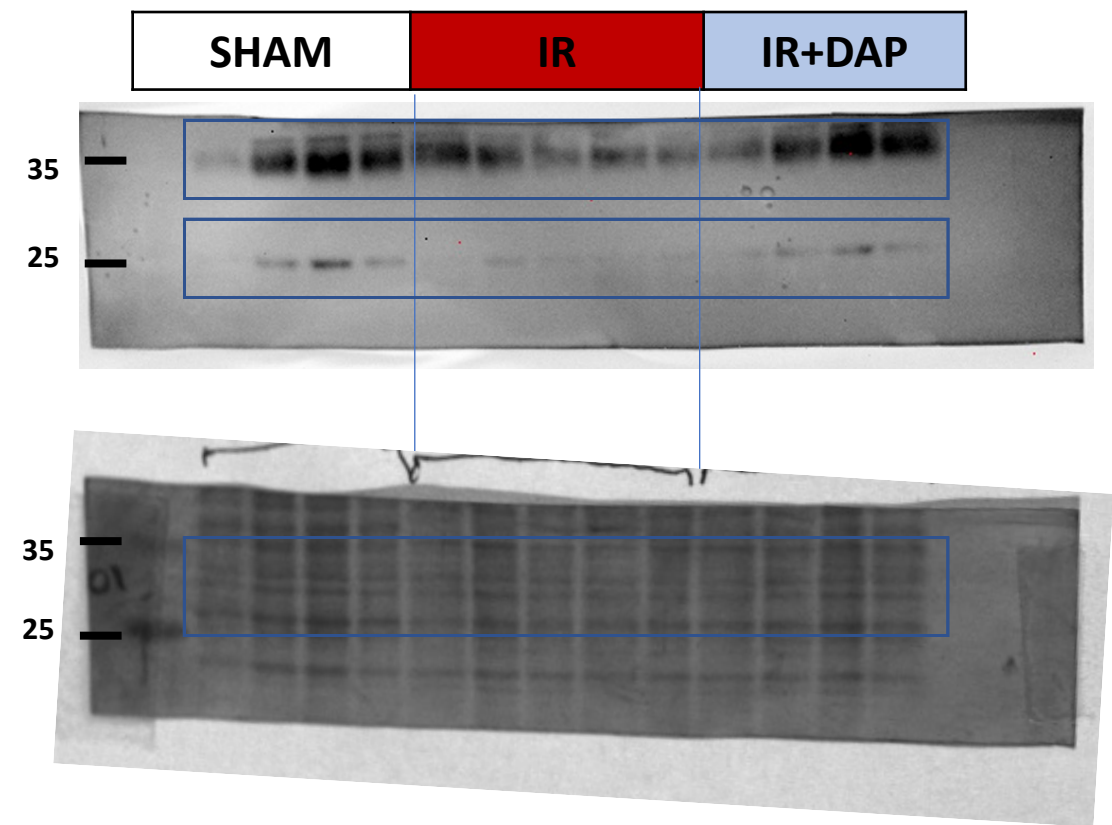
Full unedited gel for Figure 5 and 8: OXPHOS IV Y II

20 ug of kidney cortex isolated mitochondria

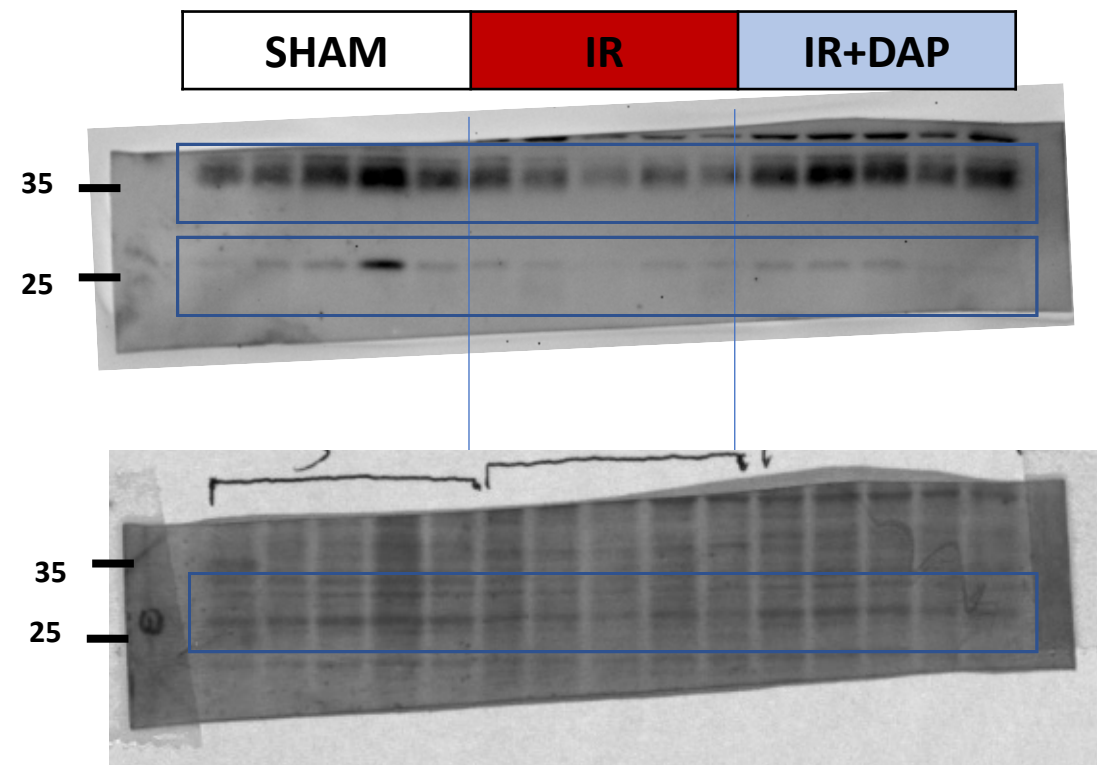
Primary Mouse Anti-OXPHOS ab110413 : 1:20,000

Anti-Mouse ab6789 1:40,000 Exp 1 min

5 days after AKI

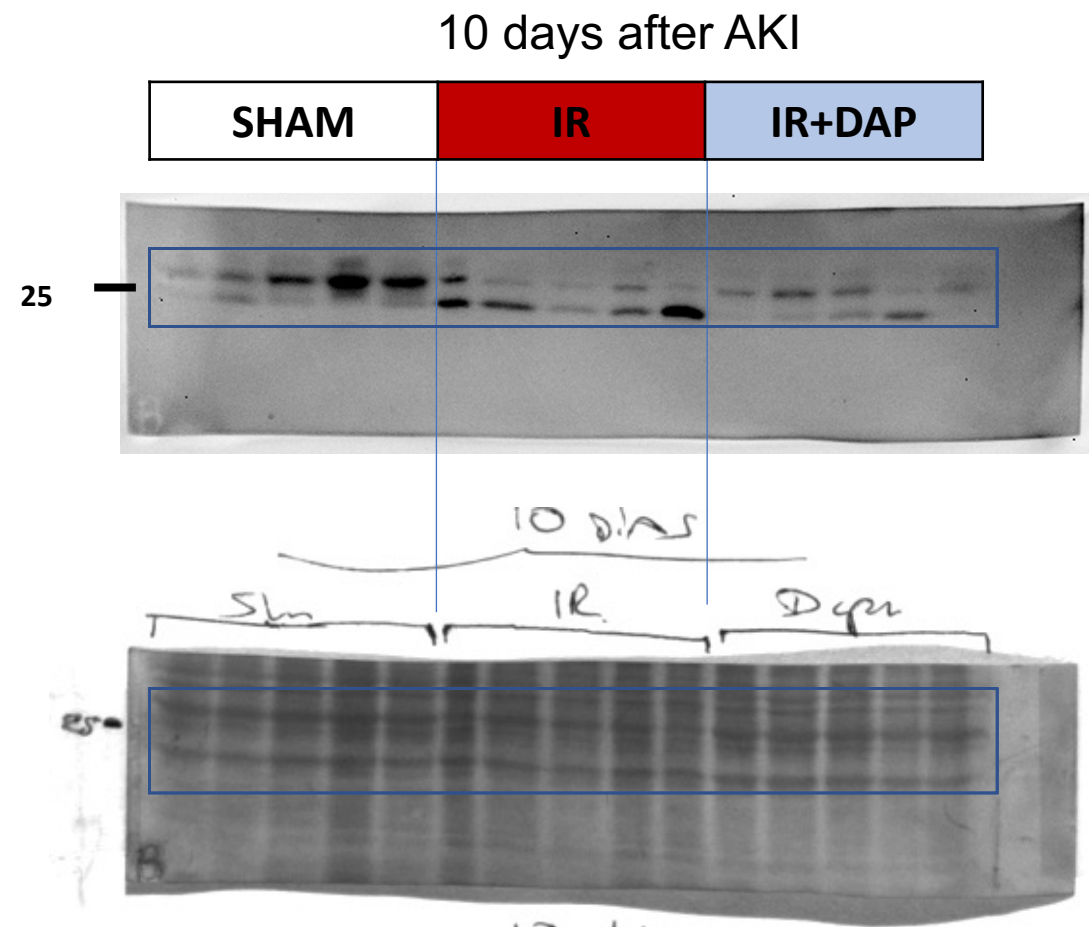
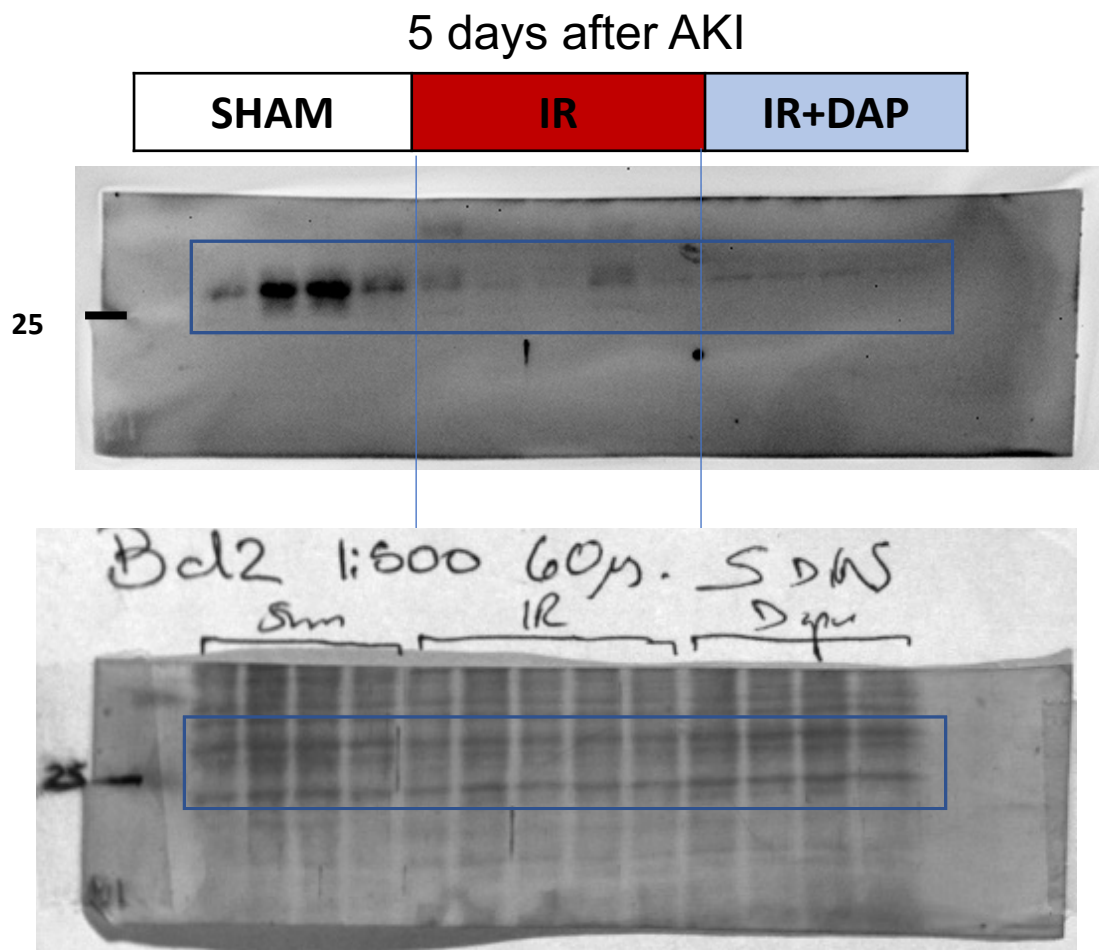


10 days after AKI



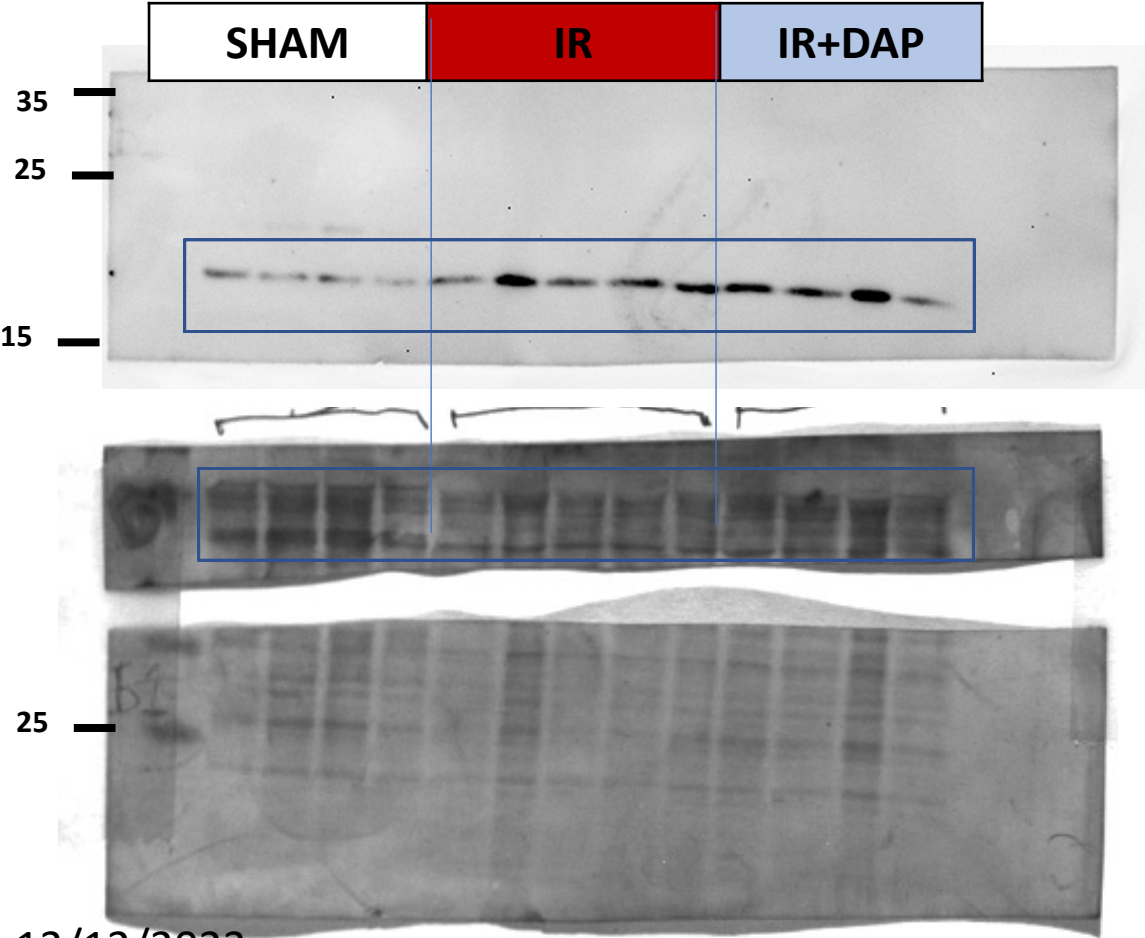
Full unedited gel for Figure 6 and 8: Bcl2
60 ug of kidney cortex isolated mitochondria

Primary Rabbit Anti-Bcl2 SAB5701336: 1:500
Anti-Rabbit A0545 1:7,500 Exp 1 min



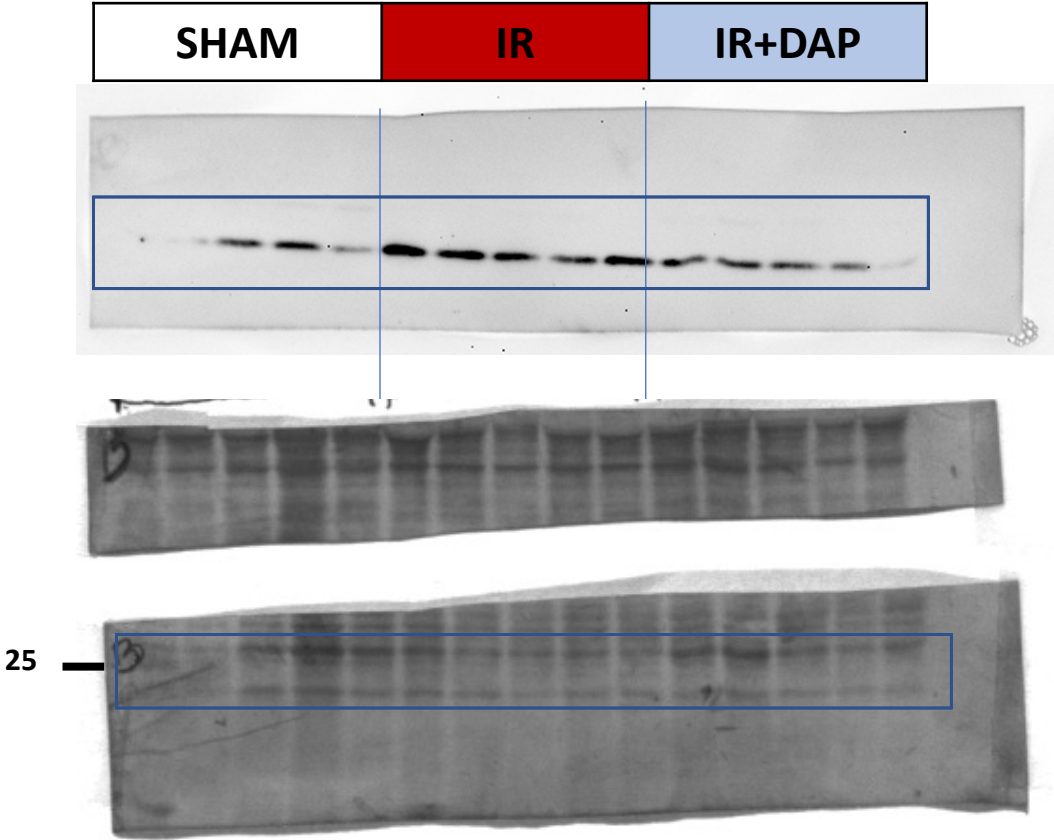
Full unedited gel for Figure 6 and 8: BAX
20 ug of kidney cortex isolated mitochondria
Primary Rabbit Anti-Bax SAB5701333 : 1:2500
Anti-Rabbit A0545 1:10,000 Exp 30 seg

5 days after AKI



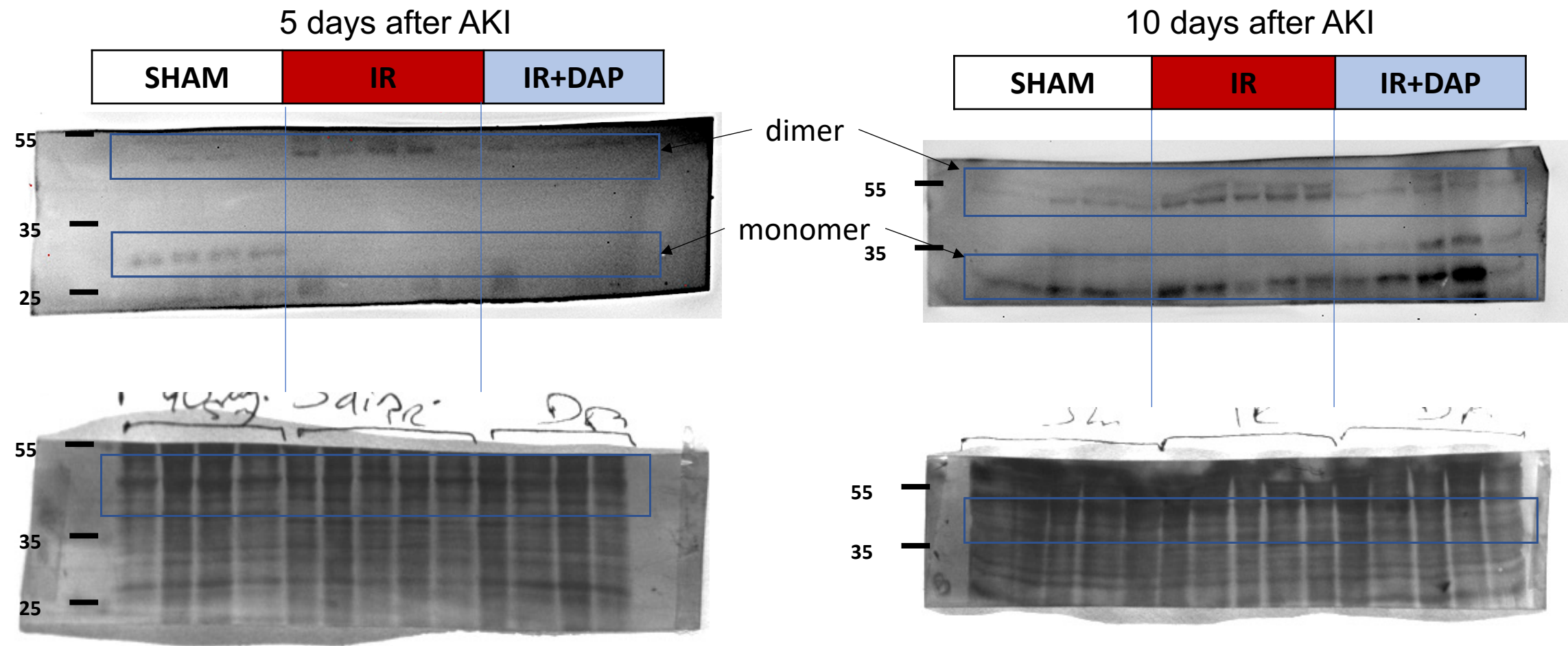
13/12/2023

10 days after AKI



Full unedited gel for Figure 6 and 8: Bnip3
60 ug of kidney cortex isolated mitochondria

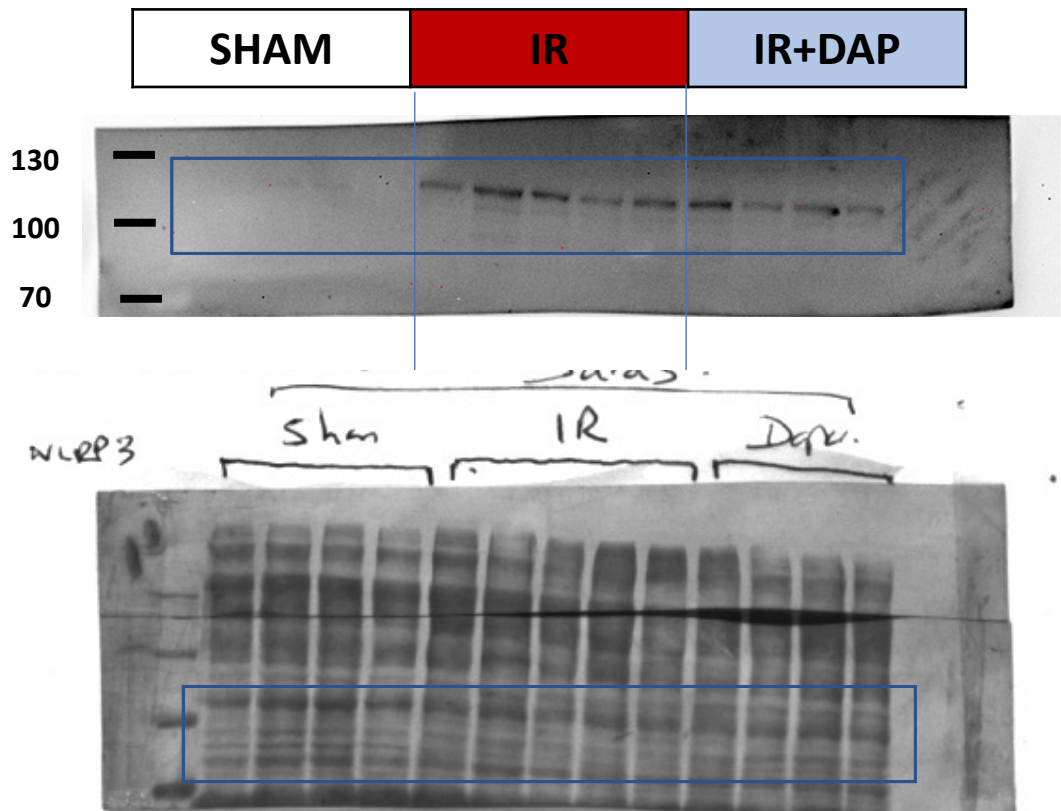
Primary Mouse Anti-Bnip3 sc-56167 1:500
Anti-Mouse ab6789 1:40,000 Exp 1 min



Full unedited gel for Figure 6 and 8: NLRP3
20 ug of kidney cortex mitochondria

Primary Rabbit Anti-NLRP3 15101S 1:2000
Anti-Rabbit 211-032-171 1:15,000 Exp 1 min

5 days after AKI



10 days after AKI

